

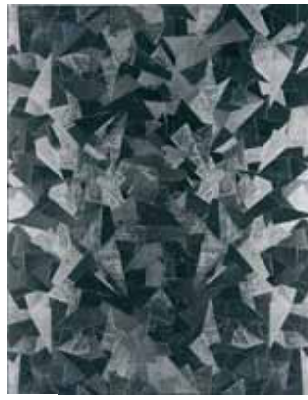
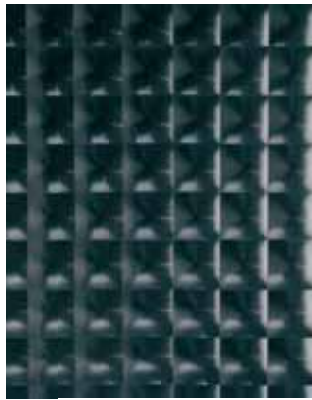
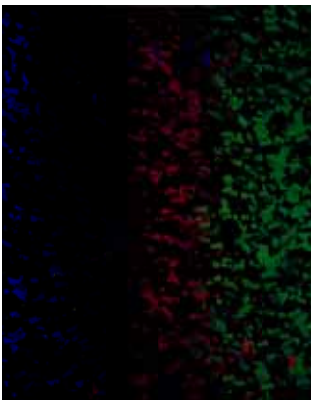


HOT OFF THE PRESS

Kaleidos

ABET LAMINATI has created four virtually interactive finishes to capture the essence of the Kaleidoscope, dissecting its structure from the optical illusion in "Lens" to the broken fragments in "Shards" and the shimmering and playful colours in "Crystal" and "Sparkles".

Kaleidos is only for vertical use and is supplied in postforming grade in sheets 3050 x 1300 x 0.9mm in white (0406), beige (0868), charcoal grey (0897) and black (0421).



FEATURED PRODUCT

Serigrafia 2008 Design Paola



Paola Navone graduated in 1973 in architecture from the Turin Politecnico. Between 1970 and 1980 worked alongside Alessandro Mendini, Ettore Sottsass Jr. and Andrea Branzi in the Alchimia and Memphis groups, the most progressive set on the Italian design scene, developing a highly productive and stimulating avant-garde stance which gained her, in 1983, the prestigious Osaka International Design Award, bestowed for the first time that year. Born in Turin, worked in Milan, but is first and foremost a citizen of the world: driven by her extreme interest in the most widely differing cultures – particularly oriental ones – she travels a great deal, maintaining a studio in Hong Kong. In her long and multi faceted career she has switched easily between the roles of architect, designer, art director, interior designer, critic, teacher and organiser of exhibitions and events, both independently and for select clients: ABET LAMINATI, Armani Casa, Knoll International, Alessi, Mondo, Driade, Orizzonti, Arcade, Oltrefrontiera, Casamilano, Antonangeli, Dada, Molteni, Natuzzi, Gervasoni and Swarovski to name just a few.



PRODUCTS IN PRACTICE

Stratificato Iridescenti



ABET LAMINATI Stratificato consists of multiple layers of cellulose fibrous material (normally paper) impregnated with thermosetting resins and bonded together by a high pressure process.

In the images shown, Stratificato Iridescenti 0911 and 0292 Lucida have been used as the bathroom wall and ceiling cladding. The Stratificato Iridescenti panels are stocked in Australia in a sheet size of 3050x1300x4mm.

The large panels of Stratificato allow for minimal vertical joints and grout free surfaces.



Karim Rashid
 © karim rashid inc. 2008

INTERNATIONAL NEWS

Kasa Digitalia designed by Karim Rashid at International Furniture Exhibition

A new series of bright shades and decors designed by Karim Rashid characterises the KASA DIGITALIA: a domestic yet technical environment, surfaced in ABET LAMINATI DigitalPrint. The International Furniture Exhibition is being held in Milan from 16th - 21st April 2008; Kasa Digitalia features at the Triennale di Milano.





COME SEE US AT
designEX 2008

10 -12 APRIL 2008 SYDNEY CONVENTION & EXHIBITION CENTRE

**CELEBRATE
 20 YEARS**